

MULTITASKING

MORSE Autocentranti o Eccentriche
Self-centering or Eccentric VISES



Valigetta di campionatura
Sample Kit case for Art.640

Art. 982

SISTEMA MODULARE FLESSIBILE
FLEXIBLE MODULAR SYSTEM

MORSE serie MULTITASKING

MULTITASKING series VISES

Pagg. 7.2 - 7.16

Di speciale interesse per gli utilizzatori di centri di lavoro a 5 assi, le morse **MULTITASKING** presentano le stesse caratteristiche costruttive illustrate per le morse della serie **FMS** e **MULTIFLEX** (accuratamente rettificate in acciaio ad alta resistenza cementato e temprato con durezza 60 HRC).

Nata espressamente per i centri a 5 assi, la gamma **MULTITASKING** permette di intervenire sulle 5 facce del particolare in lavorazione con riferimenti precisi in spazi contenuti garantendo usure inesistenti e grande rigidità. Possibilità di ausilio di sistemi meccanici o idraulici o pneumatici. **Ganasce da 74 a 140 mm.**

- ✓ Ancoraggio diretto o tramite staffe
- ✓ Posizionamento tramite fori calibrati o chiavette
- ✓ Eccentriche: possibilità di disassamento centraggio per multipli di 2 mm (*Auto-centraggio fuori asse*)
- ✓ Autocentranti con serraggi concentrici dall'esterno all'interno e viceversa
- ✓ Minimi ingombri e massima rigidità
- ✓ Costruzione solida e compatta a massima apertura rispetto agli ingombri
- ✓ Disponibili serie di ganasce intercambiabili
- ✓ Ganasce integrali per massima rigidità

CARATTERISTICHE E VANTAGGI

- USURA INESISTENTE
- RAPIDITA' DEI SERRAGGI
- MODULARITA' & VERSATILITA'
- PRECISIONI $\pm 0,02$ mm
- RIGIDITA' & SICUREZZA
- DESIGN COMPATTO E MANEGGEVOLEZZA

Si rimanda a quanto esposto a pag. 1.2 e 1.3 (morse serie STANDARD)



Art. 640

Azionamento manuale - Serraggio meccanico
Manual control - Mechanical clamping



Morse per applicazioni avanzate su centri di lavoro a 5 assi Autocentranti o eccentriche

Vises advanced applications on 5 axis machining centres Self-centering or eccentric

Of special interest to 5 axis centres users MULTITASKING vises present the same building characteristics of FMS and MULTIFLEX vises, (hardened HRC 60 & ground steel construction throughout).

Designed for 5 axis machines, MULTITASKING series of vises allow machining operations on the 5 workpieces sides with perfect alignment in a space saving design, extremely high wear resistance, with reduced deflection.
Possibility of mechanic or hydraulic or pneumatic devices application. Jaws widths from 75 to 140 mm.

- ✓ Direct vise set-up or through vise clamps
- ✓ Positioning through ground holes or keyways
- ✓ Self-centering with possibility to clamping from outside to inside and viceversa
- ✓ Eccentric jaw adjustment in steps of 2 mm (*Multiaxis self-centering*)
- ✓ Minimum deflection and overall dimensions
- ✓ Solid and rigid construction and maximum clamping ratio to the total length
- ✓ Series of interchangeable jaws available
- ✓ Solid jaws (integral with the slides) for highest rigidity

TECHNICAL FEATURES AND ADVANTAGES

- NO WEAR
- QUICK CLAMPING
- MODULARITY & VERSATILITY
- HIGHEST ACCURACIES $\pm 0,02$ mm
- RIGIDITY & SAFETY
- SPACE SAVING DESIGN & HANDY

See pag. 1.2 and 1.3 (STANDARD series vises)

Art. 670

Sistema di serraggio meccanico

- Con moltiplicatore di coppia idraulico
- Meccanico-idraulico
- Pneumatico.
- Comando manuale a pedale o tramite CNC.

Mechanic clamping

- With torque multiplier
- Hydraulic
- Mechanic-Hydraulic
- Pneumatic

Manual control, through pedal or CNC



Tipo (grandezza) morsa / Vise (type) size

Art. 640

Tipo / Type 1 e 2

Morsa autocentrante o eccentrica.
Azionamento manuale
Serraggio meccanico
Self-centering or eccentric vise.
Manual operation
Mechanical clamping



	1	2
A	74	104
W	74	99
B	15	20
C	50	70
Ø D	120	160
E	35	35
F	92	120
G	20	25
H	20	40
Ø L H7	20	20
M	9	11
kg	4,9	11
kN	16	20
Cod.	6.64.01000	6.64.02000



AMPLIA LE TUE APPLICAZIONI TRAMITE GLI ACCESSORI MODULARI !

Art. 645B

Ganascia dolce
Soft jaw



Cod.	6.64.5B100	6.64.5B200
------	------------	------------

Art. 645C

Ganascia liscia
Smooth jaw



Cod.	6.64.5C100	6.64.5C200
------	------------	------------

Art. 645D

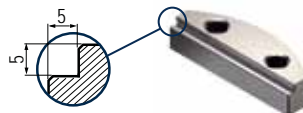
Ganascia zigrinata
Serrated jaw



Cod.	6.64.5D100	6.64.5D200
------	------------	------------

Art. 645E

Ganascia a gradino
Step jaw



Cod.	6.64.5E100	6.64.5E200
------	------------	------------

Art. 645F

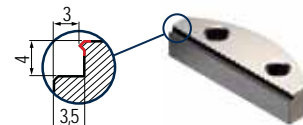
Ganascia prismatica
Prismatic jaw



Cod.	6.64.5F100	6.64.5F200
------	------------	------------

Art. 645T

Ganascia **GRIP**
GRIP jaw



Cod.	6.64.5T100	6.64.5T200
------	------------	------------

Dotazione standard:

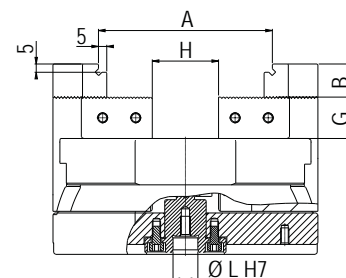
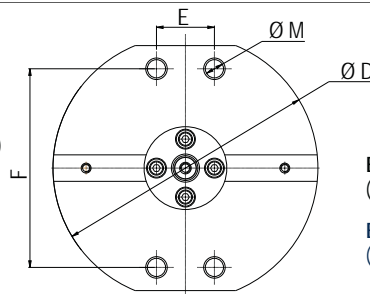
- 1 chiave esagonale Art. 377
- 1 arresto laterale Art. 370
- 1 coppia di tasselli di posizionamento Art. 297
- 1 perno di centraggio Art. 640P (Indicare dimensione in fase d'ordine)

Art. 640 Tipo / Type 1 e 2



Standard equipment:

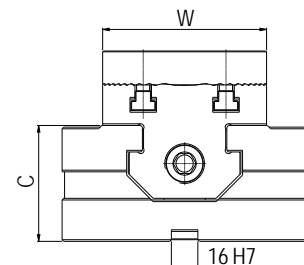
- 1 esagonal wrench Art. 377
- 1 workstop Art. 370
- 1 pair of positioning key-nuts Art. 297
- 1 positioning pin Art. 640P (Dimension to be advised at order)



Art. 640 Tipo / Type 1 e 2

Esempio di ordine: Art. 640 tipo 1
(Tasselli 18mm + Perno di centraggio 40mm)

Example of order: Art. 640 type 1
(Positioning key-nuts 18mm + Positioning pin 40mm)



Tipo (grandezza) morsa / Vise (type) size **3**

Art. 640 *Tipo / Type 3 x 166*

Morsa autocentrante o eccentrica.
Azionamento manuale. Serraggio meccanico
Self-centering or eccentric vise.
Manual operation
Mechanical clamping

A	108
A1	20
W	138
B	30
C	58
D	166
E	120
kg	13
kN	30
Cod.	7.64.03166

Tipo (grandezza) morsa / Vise (type) size **3**

Art. 640 *Tipo / Type 3 x 266*

Morsa autocentrante o eccentrica.
Azionamento manuale. Serraggio meccanico
Self-centering or eccentric vise.
Manual operation
Mechanical clamping

A	208
A1	60
W	138
B	30
C	58
D	266
E	200
kg	20
kN	30
Cod.	7.64.03266

UPGRADE YOUR VISE APPLICATIONS THROUGH MODULAR ACCESSORIES !

Art. 645B
Ganascia dolce
Soft jaw

Cod. 7.64.5B300

Art. 645C
Ganascia liscia
Smooth jaw

Cod. 7.64.5C300

Art. 645D
Ganascia zigrinata
Serrated jaw

Cod. 7.64.5D300

Art. 645E
Ganascia a gradino
Step jaw

Cod. 7.64.5E300

Art. 645F
Ganascia prismatica
Prismatic jaw

Cod. 7.64.5F300

Art. 645T
Ganascia **GRIP**
GRIP jaw

Cod. 7.64.5T300

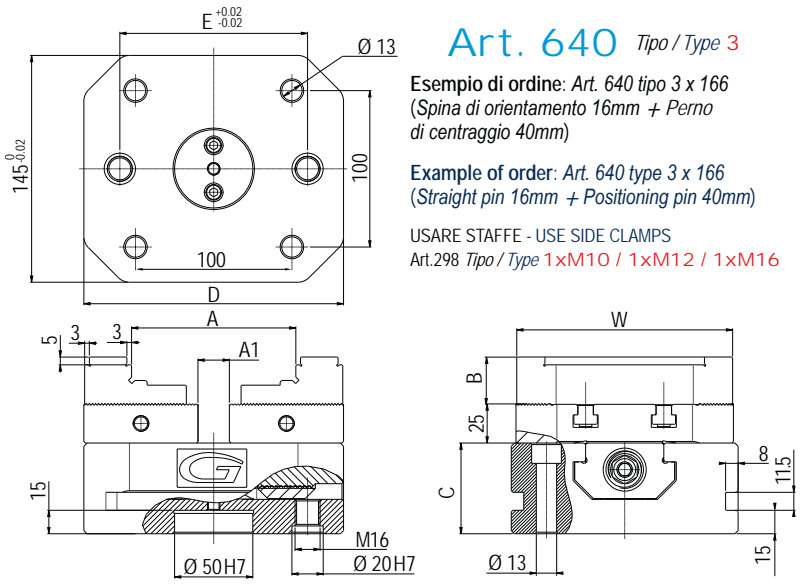
Dotazione standard:

- 1 chiave a pipa Art. 375 ■ 1 chiave a "T" Art. 376
- 1 arresto laterale Art. 370 ■ 1 spina di orientamento Art. 79
- 1 perno di centraggio Art. 640P (Indicare dimensione in fase di ordine)

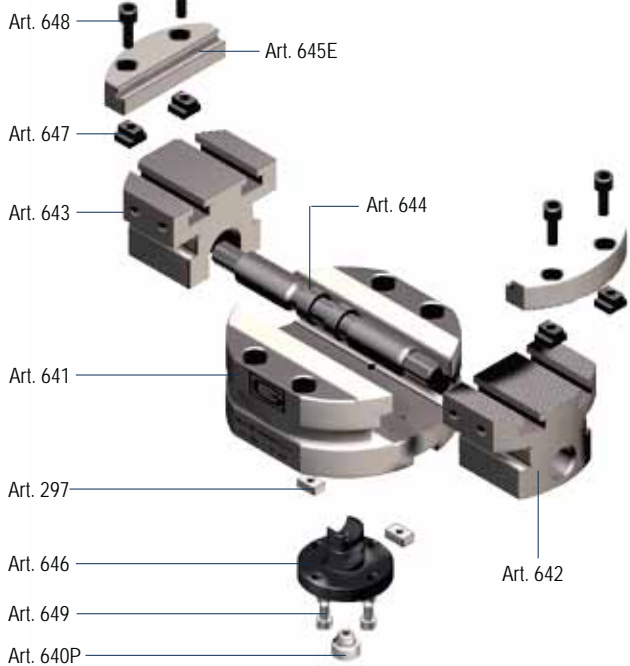


Standard equipment:

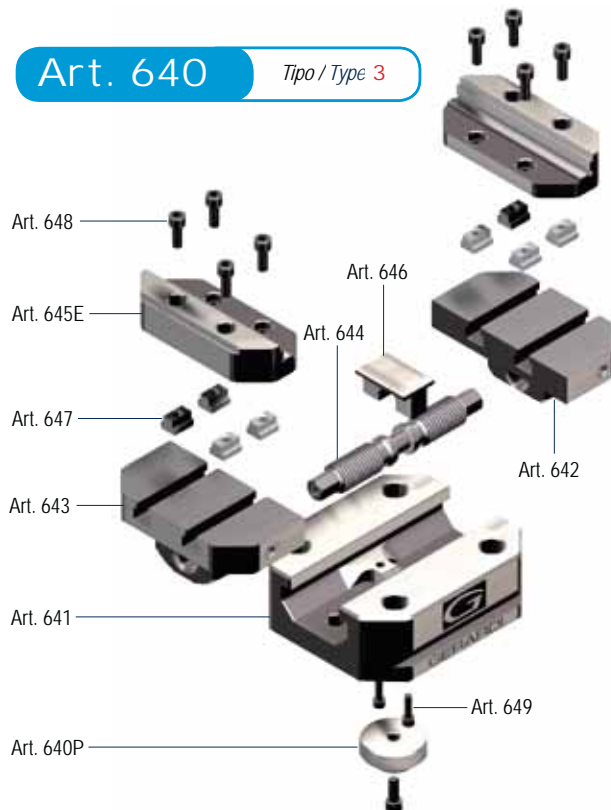
- 1 box wrench Art. 375 ■ 1 "T" wrench Art. 376
- 1 workstop Art. 370 ■ 1 straight pin Art. 79
- 1 positioning pin Art. 640P (Dimension to be advised at order)



Art. 640 *Tipo / Type 1 e 2*



Art. 640 *Tipo / Type 3*

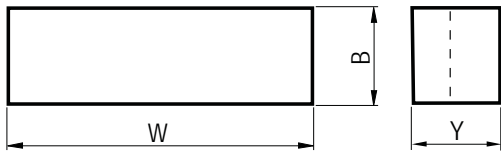


Tipo / Type		1	2
Art. 641 Corpo base Base body	Cod.	6.64.11000	6.64.12000
Art. 642 Slitta integrale destra Solid slide right hand	Cod.	6.64.21000	6.64.22000
Art. 643 Slitta integrale sinistra Solid slide left hand	Cod.	6.64.31000	6.64.32000
Art. 644 Vite di bloccaggio Main screw	Cod.	6.64.41000	6.64.42000
Art. 645E Ganascia a gradino Step jaw	Cod.	6.64.5E100	6.64.5E200
Art. 646 Forcella Yoke	Cod.	6.64.61000	6.64.62000
Art. 647 Dado a T (Cad.) T nut (Each)	Cod.	6.64.71000	6.64.72000
Art. 648 VTCEI per ganaascia Hex socked head screw for jaw	Cod.	6.64.81000	6.64.82000
Art. 649 VTCEI per forcella Hex socked head screw for yoke	Cod.	6.64.91000	6.64.92000
Art. 640P Perno di posizionamento Positioning pin	Cod.	6.64.0P100	6.64.0P200

Tipo / Type		3 x 166	3 x 266
Art. 641 Corpo base Base body	Cod.	7.64.13166	7.64.13266
Art. 642 Slitta integrale destra Solid slide right hand	Cod.	7.64.23166	7.64.23266
Art. 643 Slitta integrale sinistra Solid slide left hand	Cod.	7.64.33166	7.64.33266
Art. 644 Vite di bloccaggio Main screw	Cod.	7.64.43166	7.64.43266
Art. 645E Ganascia a gradino Step jaw	Cod.	7.64.5E300	
Art. 646 Forcella Yoke	Cod.	7.64.63000	
Art. 647 Dado a T (Cad.) T nut (Each)	Cod.	7.64.73000	
Art. 648 VTCEI per ganaascia Hex socked head crew for jaw	Cod.	7.64.83000	
Art. 649 VTCEI per forcella Hex socked head crew for yoke	Cod.	7.64.93000	
Art. 640P Perno di posizionamento Positioning pin	Cod.	7.64.0P300	

GANASCE PER MORSE MULTITASKING Art. 640 / JAWS FOR MULTITASKING VISES Art 640

Tipo (grandezza) morsa / Vise (type) size	1	2	3
---	---	---	---



B	15	20	30
Y	27,5	32,5	50
W	74	99	138

Art. 645B
Ganascia dolce / Soft jaw

K	20	30	50
X	27,5	42,5	64
Cod.	6.64.5B100	6.64.5B200	7.64.5B300

Art. 645C
Ganascia liscia / Smooth jaw

Cod.	6.64.5C100	6.64.5C200	7.64.5C300
------	------------	------------	------------

Art. 645D
Ganascia zigrinata / Serrated jaw

Cod.	6.64.5D100	6.64.5D200	7.64.5D300
------	------------	------------	------------

Art. 645E
Ganascia a gradino / Step jaw

Cod.	6.64.5E100	6.64.5E200	7.64.5E300
------	------------	------------	------------

Art. 645F
Ganascia prismatica / Prismatic jaw

ØA	7 ÷ 15	9 ÷ 20	12 ÷ 30
ØM	25 ÷ 70	35 ÷ 110	50 ÷ 160
Cod.	6.64.5F100	6.64.5F200	7.64.5F300

Art. 645T
Ganascia GRIP Jaw

Cod.	6.64.5T100	6.64.5T200	7.64.5T300
------	------------	------------	------------

Tipo (grandezza) morsa / Vise (type) size

Art. 640J Tipo / Type 1 e 2

Morsa autocentrante.
Azionamento manuale
Serraggio meccanico

Self-centering vise.
Manual operation
Mechanical clamping



	1	2
Ø A	30 ÷ 45	45 ÷ 70
W	74	99
B	60	80
C	50	70
Ø D	120	160
E	35	35
F	92	120
G	30	40
Ø L H7	20	20
Ø M	9	11
kg	5	10
kN	20	26
Cod.	7.64.0J100	7.64.0J200

AMPLIA LE TUE APPLICAZIONI TRAMITE GLI ACCESSORI MODULARI !

Art. 655B

Piastra ganascia dolce
Soft jaw-plate



Cod.	7.65.5B100	7.65.5B200
------	------------	------------

Art. 655C

Piastra ganascia liscia
Smooth jaw-plate



Cod.	7.65.5C100	7.65.5C200
------	------------	------------

Art. 655D

Piastra ganascia zigrinata
Serrated jaw-plate



Cod.	7.65.5D100	7.65.5D200
------	------------	------------

Art. 655F

Piastra ganascia prismatica
Prismatic jaw-plate



Ø	10 ÷ 18	10 ÷ 30
Cod.	7.65.5F118	7.65.5F230
Ø	15 ÷ 23 * 23 ÷ 30	25 ÷ 45
Cod.	7.65.5F123	7.65.5F245

* Per Ø 23÷30 ingombro max. (D1) = 132mm Ø (anzichè 120mm)
For Ø 23÷30 max overall dimensin (D1) Ø132mm (instead of 120mm)

Art. 655J

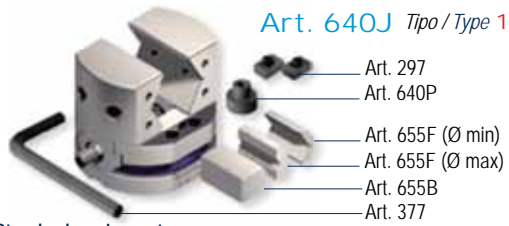
Coppia di ganasce integrali prismatiche
Prismatic solid jaws (1 pair)



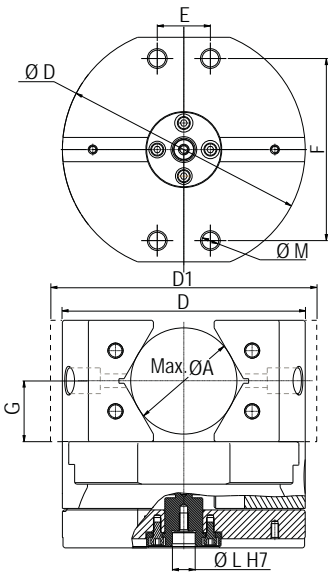
Da usare in coppia
To be used as a pair

Cod.	7.65.5J100	7.65.5J200
------	------------	------------

- Dotazione standard:**
- 1 chiave esagonale Art. 377 ■ 1 arresto laterale Art. 370
 - 2 coppie di piastre Art. 655F (Tot. 4 pezzi)
 - 1 coppia di piastre dolci Art. 655B
 - 1 coppia di tasselli di posizionamento Art. 297
 - 1 perno di centraggio Art. 640P (Indicare dimensione in fase di ordine)



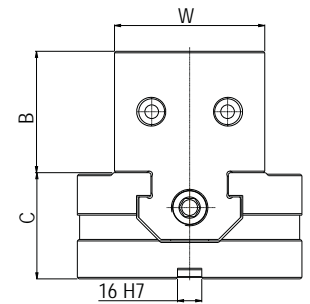
- Standard equipment:**
- 1 exagonal wrench Art. 377 ■ 1 workstop Art. 370
 - 2 pair of plates Art. 655F (Tot. 4 pcs)
 - 1 pair soft jaw plates Art. 655B
 - 1 pair of positioning key-nuts Art. 297 ■ 1 positioning pin Art. 640P (Dimension to be advised at order)



Art. 640J Tipo / Type 1 e 2

Esempio di ordine: Art. 640J tipo 2
(Tasselli 16mm + Perno di centraggio 30mm)

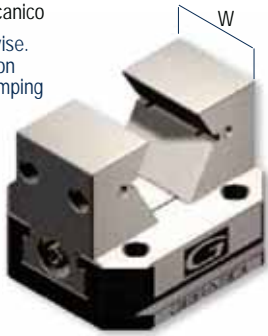
Example of order: Art. 640J type 2
(Positioning key-nut s16mm + Positioning pin 30mm)



Tipo (grandezza) morsa / Vise (type) size **3**

Art. 640J Tipo / Type 3 x 166

Morsa autocentrante.
Azionamento manuale.
Serraggio meccanico
Self-centering vise.
Manual operation
Mechanical clamping

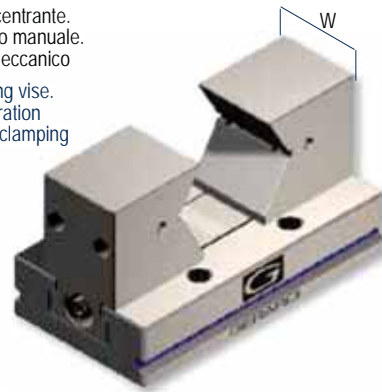


Ø A	44 ÷ 68
W	78
B	75
C	58
D	166
E	120
F	-
G	45
L	
kg	15
kN	30
Cod.	7.64.0J310

Tipo (grandezza) morsa / Vise (type) size **3**

Art. 640J Tipo / Type 3 x 266

Morsa autocentrante.
Azionamento manuale.
Serraggio meccanico
Self-centering vise.
Manual operation
Mechanical clamping



Ø A	48 ÷ 102
W	78
B	95
C	58
D	266
E	120
F	200
G	55
L	66
kg	22
kN	30
Cod.	7.64.0J320

UPGRADE YOUR VISE APPLICATIONS THROUGH MODULAR ACCESSORIES !

Art. 655B

Piastra ganascia dolce
Soft jaw-plate



Cod.	7.65.5B316
------	------------

Art. 655C

Piastra ganascia liscia
Smooth jaw-plate



Cod.	7.65.5C316
------	------------

Art. 655D

Piastra ganascia zigrinata
Serrated jaw-plate



Cod.	7.65.5D316
------	------------

Art. 655F

Piastra ganascia prismatica
Prismatic jaw-plate



Tipo / Type 3 x 166	12 ÷ 32	14 ÷ 34	16 ÷ 36	18 ÷ 45
Ø Min / Ø Max				
Tipo / Type 3 x 266	12 ÷ 38	14 ÷ 48	16 ÷ 58	24 ÷ 65
Ø Min / Ø Max				
Cod	7.65.5F330	7.65.5F335	7.65.5F345	7.65.5F350

Art. 655J

Coppia di ganasce integrali prismatiche
Prismatic solid jaws (1 pair)



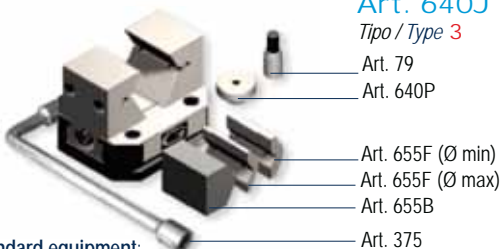
Da usare in coppia
To be used as a pair

Ø	44 ÷ 68	48 ÷ 102
Cod.	7.65.5J316	7.65.5J326

Dotazione standard:

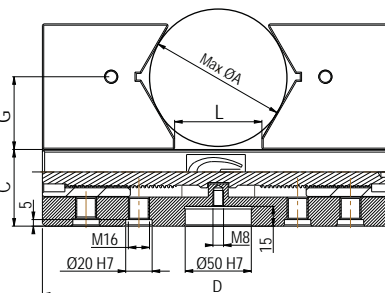
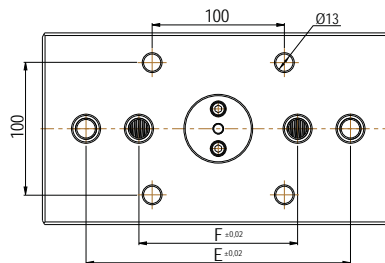
- 1 chiave a pipa Art. 375 ■ 1 arresto laterale Art. 370
 - 2 coppie di piastre Art. 655F (Tot. 4 pezzi)
 - 1 coppia di piastre dolci Art. 655B
 - 1 spina di orientamento Art. 79 ■ 1 perno di centraggio Art. 640P
- (Indicare dimensione in fase di ordine)

Art. 640J
Tipo / Type 3



Standard equipment:

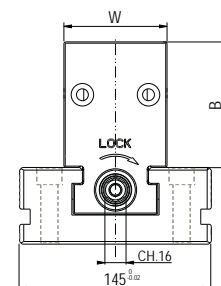
- 1 box wrench Art. 375 ■ 1 workstop Art. 370
 - 2 pair of plates Art. 655F (Tot. 4 pcs)
 - 1 pair soft jaw plates Art. 655B
 - 1 straight pin Art. 79 ■ 1 positioning pin Art. 640P
- (Dimension to be advised at order)



Art. 640J Tipo / Type 3

Esempio di ordine: Art. 640J tipo 3 x 266
(Spina di orientamento 16mm + Perno di centraggio 30mm)

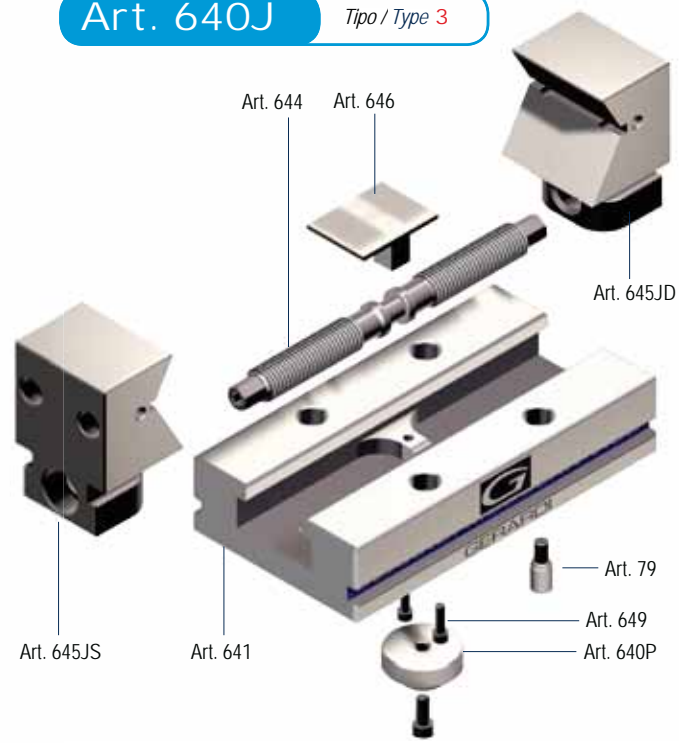
Example of order: Art. 640J type 3 x 266
(Straight pin 16mm + Positioning pin 30mm)



Art. 640J Tipo / Type 1 e 2



Art. 640J Tipo / Type 3



Tipo / Type	1	2
-------------	---	---

Art. 641 Corpo base Base body	Cod. 6.64.11000	6.64.21000
--	-----------------	------------

Art. 644 Vite di bloccaggio Main screw	Cod. 6.64.41000	6.64.42000
---	-----------------	------------

Art. 645JD * Ganascia integrale prismatica dx Solid prismatic right jaw	Cod. 7.64.5JD10	7.64.5JD20
--	-----------------	------------

Art. 645JS * Ganascia integrale prismatica sx Solid prismatic left jaw	Cod. 7.64.5JS10	7.64.5JS20
---	-----------------	------------

Art. 646 Forcella Yoke	Cod. 6.64.61000	6.64.462000
-------------------------------------	-----------------	-------------

Art. 649 VTCEI per forcella Hex socketed head crew for yoke	Cod. 6.64.91000	6.64.492000
--	-----------------	-------------

Art. 640P Perno di posizionamento Positioning pin	Cod. 6.64.0P100	6.64.0P200
--	-----------------	------------

Tipo / Type	3 x 166	3 x 266
-------------	---------	---------

Art. 641 Corpo base Base body	Cod. 7.64.13166	7.64.13266
--	-----------------	------------

Art. 644 Vite di bloccaggio Main screw	Cod. 7.64.43166	7.64.43266
---	-----------------	------------

Art. 645JD * Ganascia integrale prismatica dx Solid prismatic right jaw	Cod. 7.64.5JD31	7.64.5JD32
--	-----------------	------------

Art. 645JS * Ganascia integrale prismatica sx Solid prismatic left jaw	Cod. 7.64.5JS31	7.64.5JS32
---	-----------------	------------

Art. 646 Forcella Yoke	Cod. 7.64.63166	7.64.63266
-------------------------------------	-----------------	------------

Art. 649 VTCEI per forcella Hex socketed head crew for yoke	Cod. 7.64.93000	
--	-----------------	--

Art. 640P Perno di posizionamento Positioning pin	Cod. 7.64.0P000	
--	-----------------	--

* **Art. 645JD** + **Art. 645JS** = **Art. 655J**

7

DIAGRAMMI CON FORZE DI SERRAGGIO
DIAGRAM WITH CLAMPING FORCE
GRUPPI DI SERRAGGIO MECCANICI

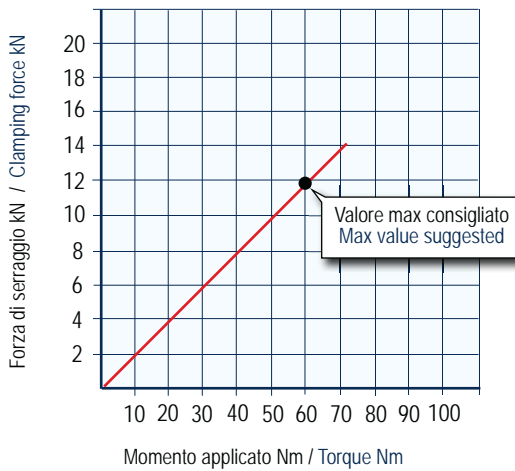
I diagrammi seguenti consentono di determinare le forze di serraggio ottenibili con le morse di varia grandezza (da 1 a 3), in funzione della forza applicata

MECHANICAL CLAMPING DEVICES

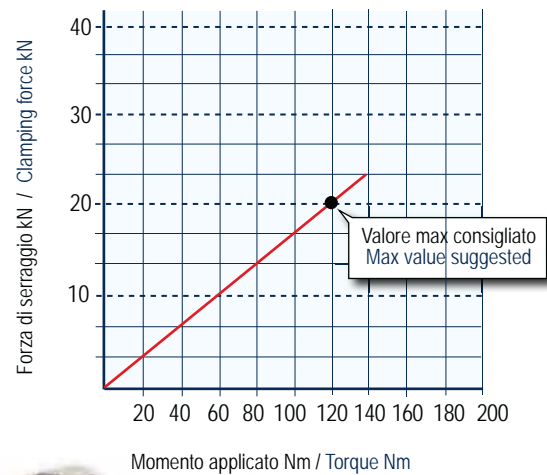
The following diagrams give the clamping force that can be obtained with each vise type (size 1 to 3) as a function of wrenching force

**MORSE MULTITASKING TIPO 1
MULTITASKING VISES TYPE 1**

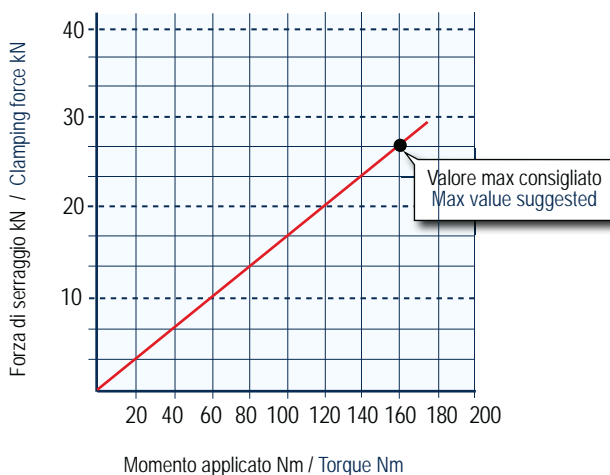
Chiave dinamometrica BETA 610/10X
Torque wrench BETA 610/10X


Art. 640
Tipo / Type 1 e 2
**MORSE MULTITASKING TIPO 2
MULTITASKING VISES TYPE 2**

Chiave dinamometrica BETA 610/10X
Torque wrench BETA 610/10X


**MORSE MULTITASKING TIPO 3
MULTITASKING VISES TYPE 3**

Chiave dinamometrica BETA 610/10X
Torque wrench BETA 610/10X


Art. 640
Tipo / Type 3


NB: Alcuni fattori, come la lubrificazione, lo staffaggio, gli attriti ed altro, possono modificare i valori indicati fino a $\pm 10\%$. Per un corretto utilizzo non superare i valori indicati nel grafico

Some factor as lubrication, clamping on the machine table, frictions and more can modify above values within a $\pm 10\%$ range. For optimum operation do not exceed chart values.

Tipo (grandezza) morsa / Vise (type) size	1	2
Art. 641H <i>Tipo / Type 1 e 2</i>		
Distanziale semplice Simple spacer		
ØA	119	158
*C	130	130
L	92	120
M	35	35
ØJ	50 H7	50 H7
kg	6	10
Cod.	7.64.1H100	7.64.1H200



AMPLIA LE TUE APPLICAZIONI TRAMITE GLI ACCESSORI MODULARI !

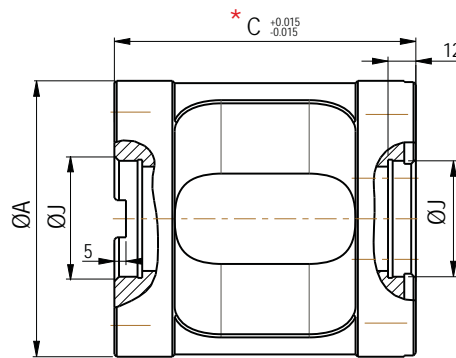
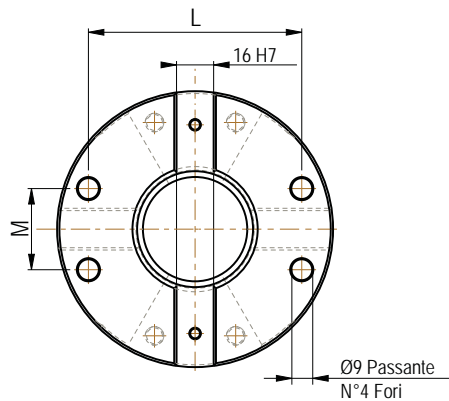
Dotazione standard:

- 1 perno di centraggio Art. 640P
(Indicare dimensione "J" in fase di ordine)



Standard equipment:

- 1 positioning pin Art. 640P
(*"J" dimension to be advised at order)



* Disponibili anche nelle altezze 50 / 75 / 100mm - Also available height dimensions 50 / 75 / 100mm

Tipo (grandezza) morsa / Vise (type) size **3**

Art. 641H Tipo / Type 3 x 166

Distanziale semplice
Simple spacer




A	166
B	145
*C	145
D	120
E	120
L	140
L1	60
M	126
M1	70
ØJ	50 H7
kg	14
Cod.	7.64.1H3166

Tipo (grandezza) morsa / Vise (type) size **3**

Art. 641H Tipo / Type 3 x 266

Distanziale semplice
Simple spacer



A	266
B	125
*C	145
D	200
E	200
L	240
L1	160
M	125
M1	80
ØJ	-
kg	21,5
Cod.	7.64.1H3266

UPGRADE YOUR VISE APPLICATIONS THROUGH MODULAR ACCESSORIES !

Dotazione standard:

- 1 spina di orientamento Art. 79 (Indicare dimensione "E" in fase di ordine)
- 1 perno di centraggio Art. 640P (Indicare dimensione "J" in fase di ordine)

Standard equipment:

- 1 straight pin Art. 79 ("E" dimension to be advised at order)
- 1 positioning pin Art. 640P ("J" dimension to be advised at order)



Dotazione standard:

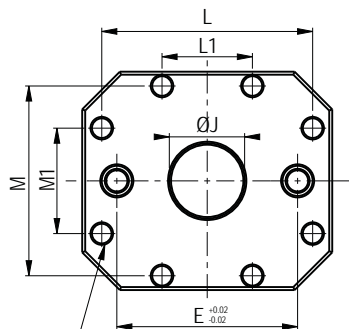
- 1 spina di orientamento Art. 79 (Indicare dimensione "E" in fase di ordine)
- 1 perno di centraggio Art. 640P (Indicare dimensione "J" in fase di ordine)

Standard equipment:

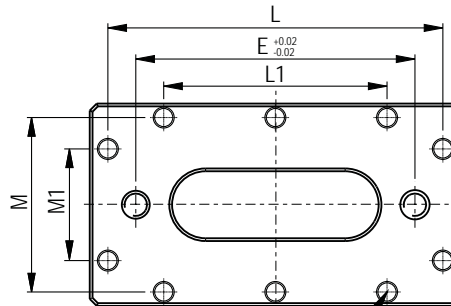
- 1 straight pin Art. 79 ("E" dimension to be advised at order)
- 1 positioning pin Art. 640P ("J" dimension to be advised at order)



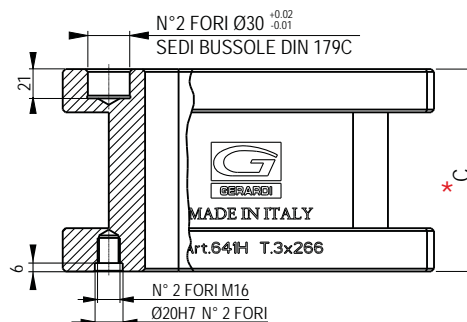
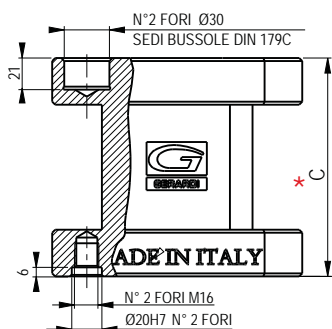
VISTA DA SOPRA - TOP VIEW



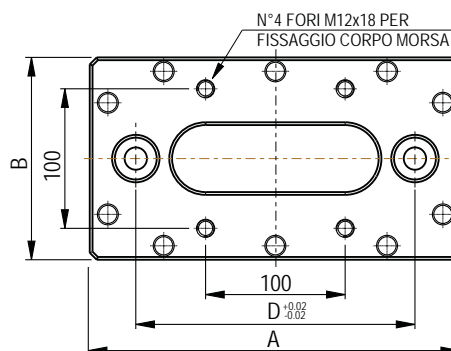
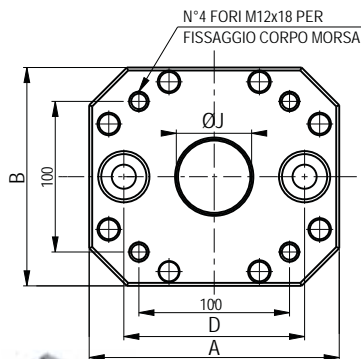
N° 8 FORI Ø13 PER BLOCCAGGIO DISTANZIALE



N° 10 FORI Ø13 PER BLOCCAGGIO DISTANZIALE



VISTA DA SOTTO - BOTTOM VIEW



* Disponibili anche nelle altezze 50 / 75 / 100mm - Also available height dimensions 50 / 75 / 100mm

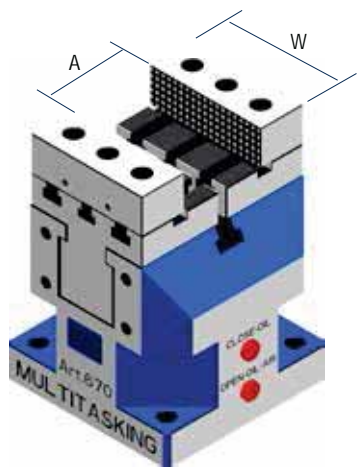


ASSERVIMENTO INTERLOCK / OPERATED Art. 670ME

Art. 670

Azionamento manuale
Serraggio meccanico
Manual operation
Mechanical clamping

(*) Usare solo avvitatori pneumatici con frizione regolabile
Use only pneumatic tools with adjustable clutch



A	88
W	130
B	40
C	190
D	32
E	50
F	8,8
G	16H7
H	150
kg	40

MANUALE con chiave dinamometrica Art.357
Avvitatore pneumatico EXTRA (*)
MANUAL
Pneumatic screw EXTRA (*)

Serraggio Clamping	MECCANICO MECHANICAL
Apertura Opening	MANUALE MANUAL
Forza di serraggio Clamping force	40 - 50 kN

Cod. 6.67.0ME20



AMPLIA LE TUE APPLICAZIONI TRAMITE GLI ACCESSORI MODULARI !

Art. 745B

Ganascia dolce
Soft jaw



Cod. 7.74.5B200

Art. 745C

Ganascia liscia
Smooth jaw



Cod. 7.74.5C200

Art. 745D

Ganascia zigrinata
Serrated jaw



Cod. 7.74.5D200

Art. 745E

Ganascia a gradino
Step jaw



Cod. 7.74.5E200

Art. 745F

Ganascia prismatica
Prismatic jaw



Cod. 7.74.5F200

Art. 745T

Ganascia **GRIP**
GRIP jaw



Cod. 7.74.5T200

Art. 745J

Ganascia integrale
Solid jaw

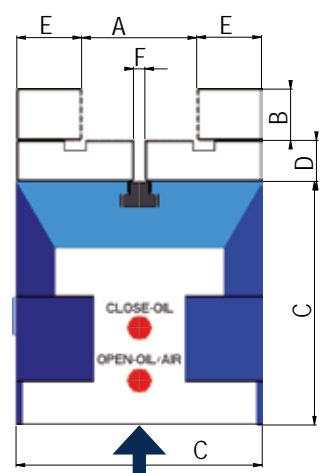
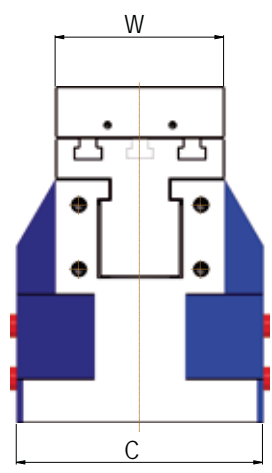


Cod. 7.74.5J200

Art. 670ME

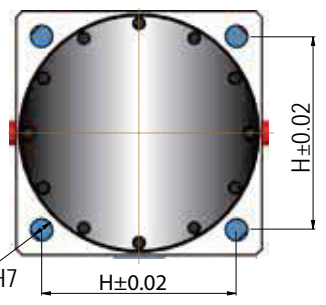
- Dotazione standard:**
- 1 chiave dinamometrica digitale a cricchetto e bussola Art. 357
 - N. 4 viti calibrate a colletto Art. 83B

- Standard equipment:**
- 1 torque wrench digital ratchet type with hexagon
 - N. 4 shoulder calibrated screw Art. 83B



Esempio di ordine: Art. 670MO
Example of order: Art. 670MO

(Vista da "A" / Show from "A")



Art. 670MO		Art. 670ID		Art. 670PN	
MECCANICO / IDRAULICO Centralina EXTRA		IDRAULICO Centralina EXTRA		PNEUMATICO (7 bar) PNEUMATIC (7 bar)	
MACHANICAL / HYDRAULIC Power unit EXTRA		HYDRAULIC Power unit EXTRA		Moltiplicatore aria 2:1 EXTRA (Booster)*	
Serraggio Clamping	MECCANICO A MOLLA MECHANICAL with SPRING	Serraggio Clamping	IDRAULICO HYDRAULIC	Serraggio Clamping	PNEUMATICO PNEUMATIC
Apertura Opening	IDRAULICA HYDRAULIC	Apertura Opening	IDRAULICA HYDRAULIC	Apertura Opening	PNEUMATICA PNEUMATIC
Forza di serraggio Clamping force	20 - 30 kN	Forza di serraggio Clamping force	40 - 50 kN	Forza di serraggio Clamping force	10 - 12 kN 20 - 24 kN (Booster)*
6.67.0MO20		6.67.0ID20		6.67.0PN20	

UPGRADE YOUR VISE APPLICATIONS THROUGH MODULAR ACCESSORIES !

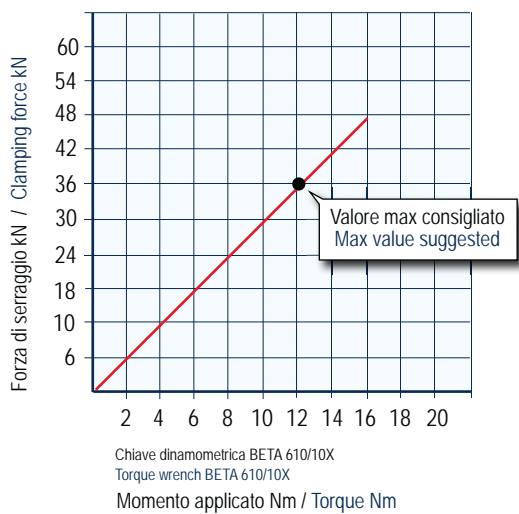
DIAGRAMMI CON FORZE DI SERRAGGIO

DIAGRAM WITH CLAMPING FORCE

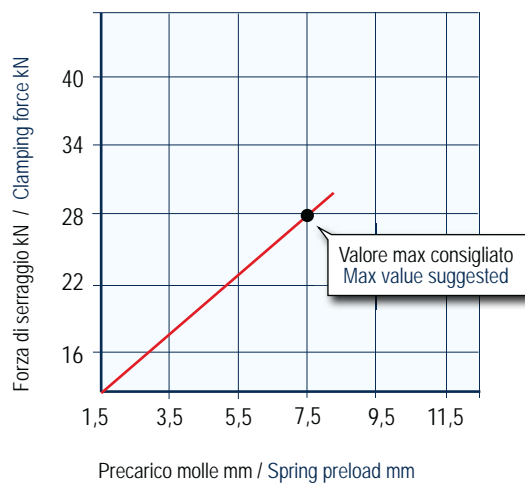
I diagrammi seguenti consentono di determinare le forze di serraggio

The following diagrams give the clamping force

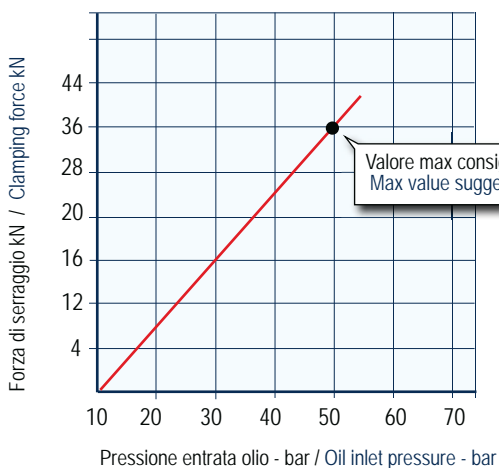
Art. 670ME



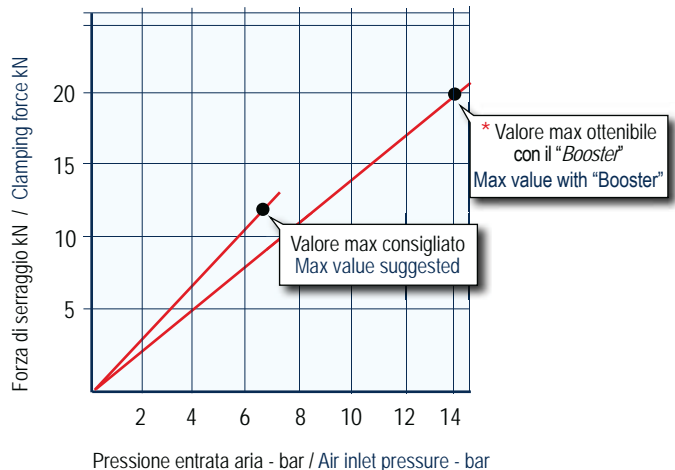
Art. 670MO



Art. 670ID

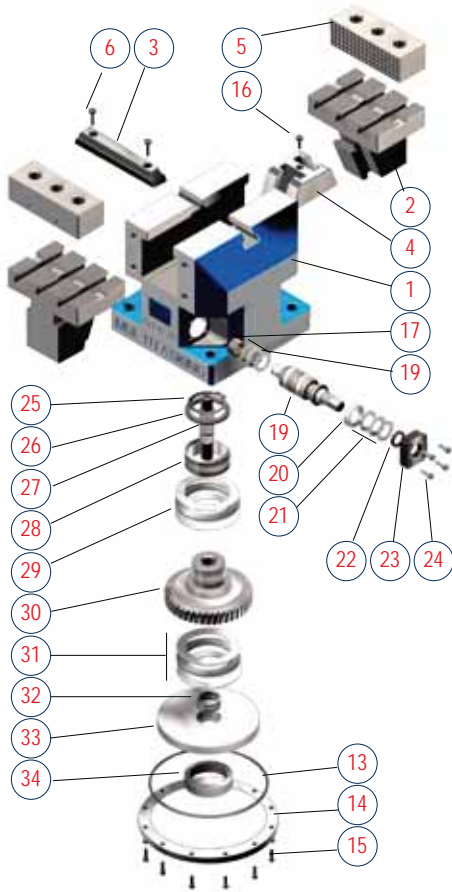


Art. 670PN



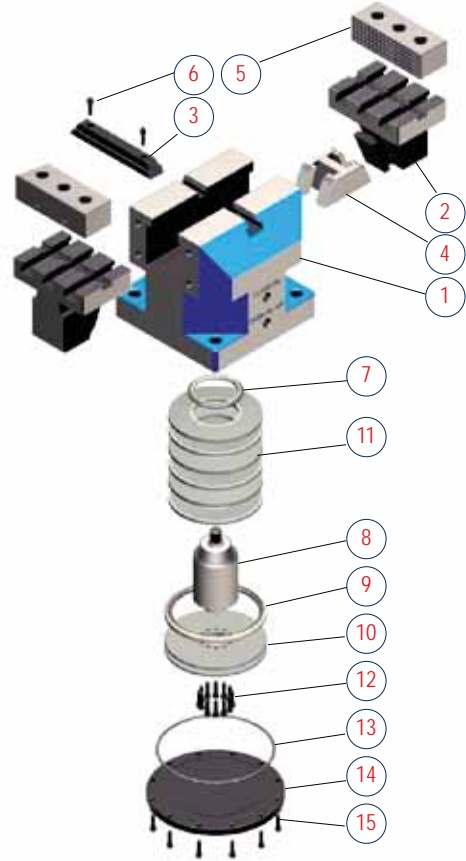
Art. 670ME

Serraggio meccanico - Apertura manuale
Mechanical clamping - Manual opening



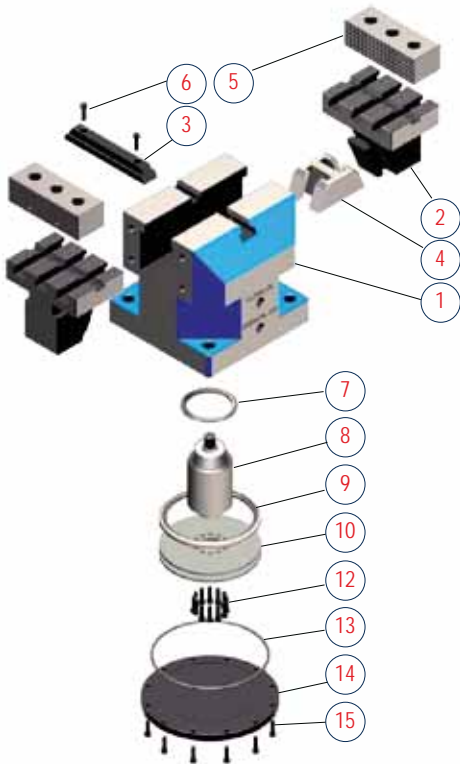
Art. 670MO

Serraggio meccanico a molla - Apertura idraulica
Mechanical clamping with spring - Hydraulic opening



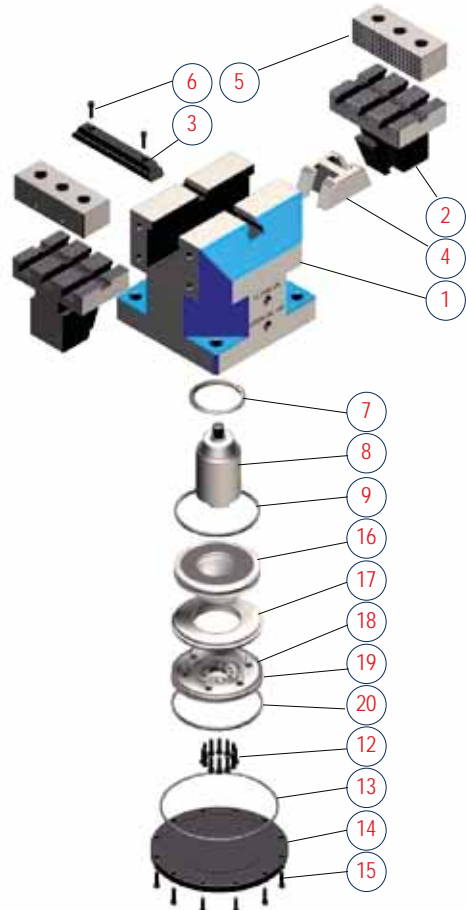
Art. 670ID

Serraggio idraulico - Apertura idraulica
Hydraulic clamping - Hydraulic opening



Art. 670PN

Serraggio pneumatico - Apertura pneumatica
Pneumatic clamping - Pneumatic opening



Per ordinare un pezzo di ricambio è sufficiente indicare l'articolo seguito dal relativo numero di riferimento. Esempio: Art. 670ID / (9)

To order a spare part please indicate the article followed by the corresponding number. Example: Art. 670ID / (9)